

 RENAISSANCE @  COTSWOLD
ASIA

About Us

Cotswold Asia - a global leader and sustainable source of trim and sundries for apparel brands.

Products include: **Pocketing, Fusibles, Interlinings and Performance Stretch Waistbands.**

A clear focus on making our world a better place for future generations through recycled product innovation and a reduced carbon footprint.



Sustainable / Process Control Certifications



CTPATTM
YOUR SUPPLY CHAIN'S STRONGEST LINK.



Why is
Cotswold the
right partner for
you ?

- Competitive global value
- Unparalleled global service
- We are “local” in every region and support:
 - QIZ (Egypt & Jordan)
 - NAFTA/CAFTA
 - ASIA (China, Sri Lanka, Africa, India, Vietnam, Bangladesh)
- All our products are made Sustainably within the guidelines of our Renaissance program



A GLOBAL SYSTEM FOR SUSTAINABLE
INTERIOR TRIMS AND SUBORIES



RENAISSANCE

Responsible Sourcing

We take responsible sourcing seriously. Management is committed to advancing policies and systems to ensure that all aspects of product manufacturing are tracked and traced. **Cotswold uses only RECYCLED polyester in all our products and only US Cotton or BCI Cotton in production.**



Ethical behavior, concern for employee health and safety, care for the environment and community involvement are paramount and the daily focus of management.

Corporate Social Responsibility

Driven largely by technological innovation, we strive hard to reduce our dependency on finite resources by being more efficient, more thoughtful and flexible enough to make changes for the better through each aspect of our business.

Cotswold takes pride in the people we employ as their talents and skills are our main assets. Our associates are encouraged to part of our sustainable mindset, giving them opportunities to be part of all decision-making processes.



Localized FTA Delivery



Made sustainably
with CiCLO fibers



Leading innovative efforts to reduce the environmental impact of synthetic microfiber pollution and unrecycled textiles.

CiCLO® fibers, yarns and textiles have been proven effective over the course of several years through reliable scientific data gathered from third party laboratory studies that determine the rate and extent of biodegradation in simulated environments, including sea water, landfill, wastewater treatment plants and soil.



Recycled Product Innovation

Recycled Fiber Sourcing

A clear focus on making our world a better place for future generations through recycled product innovation and a reduced carbon footprint.



Cotswold uses only RECYCLED polyester in all our products.

Ethical behavior, concern for employee health and safety, care for the environment and community involvement are paramount and the daily focus of management.

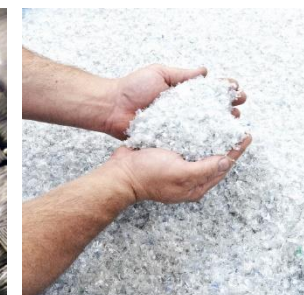
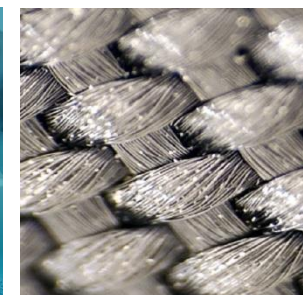


Durable Anti-Microbial Finish

Lasting 25 Home Washes

Anti-Microbial Fibers

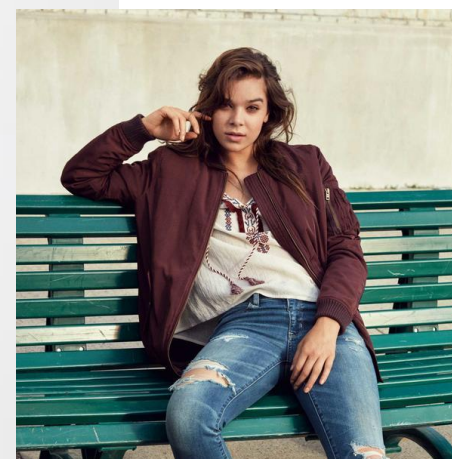
Saxon Shield is a long-lasting anti-microbial formula that is inherent in each pocketing fiber. Once applied, it is then cured through a gentle heat process.



This formula then inhibits the growth of germs and is durable through multiple home launderings.

Pocketing

Comfort | Durability | Value



Cotswold's Men's Denim & Twill Pocketing

- Durable, soft, comfortable
 - Lightweight or heavyweight
 - Consistent shrinkage
 - Available in various weights and constructions
- **Explorer - brushed 3X1 twill, 7.5oz**
 - **Utah - brushed 3x1 twill, 5.5oz**
 - **Husky - plain weave, 4.7oz**
 - **Tuffy - 2X1 twill, 4.1oz**
 - **Charleston - plain weave & twill, 3.5oz**
 - **Printed - any patterns or logos**



Cotswold's Women's Pocketing

- Lightweight and flexible
- Consistent shrinkage
- Soft & Supple
- Available in various weights and constructions
 - **Tuffy** - 2X1 twill, 4.1oz
 - **Charleston** - plain weave & twill, 3.5oz
 - **Sierra** - plain weave, 2.8oz.
 - **Seville** – plain weave, 2.5oz
 - **Printed** – any patterns or logos



Cotswold's "Symphony" Stretch Pocketing

SYMPHONY
STRETCH

- Stretches with shell fabric to prevent puckering
- Lightweight and flexible
- Consistent recovery
- Extended pocket panels allow for a "Tummy Control"
- Available in various weights and constructions

- **Symphony One Twill - 4.3oz**
- **Symphony Two Twill - 3.5oz**
- **Symphony Three Herringbone - 3.6oz**
- **Symphony 5 – 2.8oz.**
- **Power Mesh Pocketing**
- Printed – any patterns or logos





RENAISSANCE @ COTSWOLD
ASIA

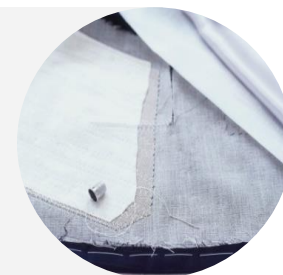
FUSIBLES

Strength | Comfort | Value

Fusibles

Strength | Comfort | Value

- Coated & uncoated fusible interlinings
- Normal, enzyme or repeated washings
- For jacket collars, cuffs and plackets



Belt Loop Fusible

Strength | Proven | Value

- A resin film that melts into denim fibers
- Stabilizing yarns to prevent belt loop fraying
- Eliminates trimming of loose threads
- Lasts for the life of the garment





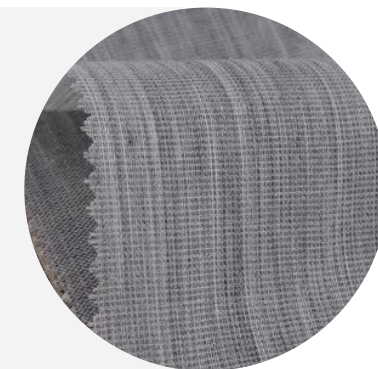
CANVAS & FELTS

Strength | Performance | Value

Felt Canvas & Armhole Covers

Strength | Performance | Proven

- Foam Bonded
- Needle Punch Felt
- 100% Polyester
- Stitch Bonded
- Double Sided





RENAISSANCE @ COTSWOLD
ASIA

INTERLININGS

For Denim & Twill

Woven Interlining for Casual and Dress Shirts

For Cotton or Synthetic Blends

- 100% Cotton & Poly-Cotton Blends
- White, SB, Navy, Charcoal & Black
- Variety of weights & sizes
- Cut to order or stock
- HDPE Coating



Non-Woven Fusible

For Denim, Twill & Microfiber

- 50% Polyester – 50% Polyamid
- Lightweight & strong
- White, Dull White, Black, Charcoal
- FDI Coating





RENAISSANCE @ COTSWOLD
ASIA

WAISTBANDS

Denim & Twill Constructed Waistband

Waistbands for Denim, Twill & Althliesure

Denim & Twill Constructed Waistband

- 100% Cotton & blended fibers
- Any color, fiber, or weave combinations
- Made to order
- Printed logo, stripes or patterns

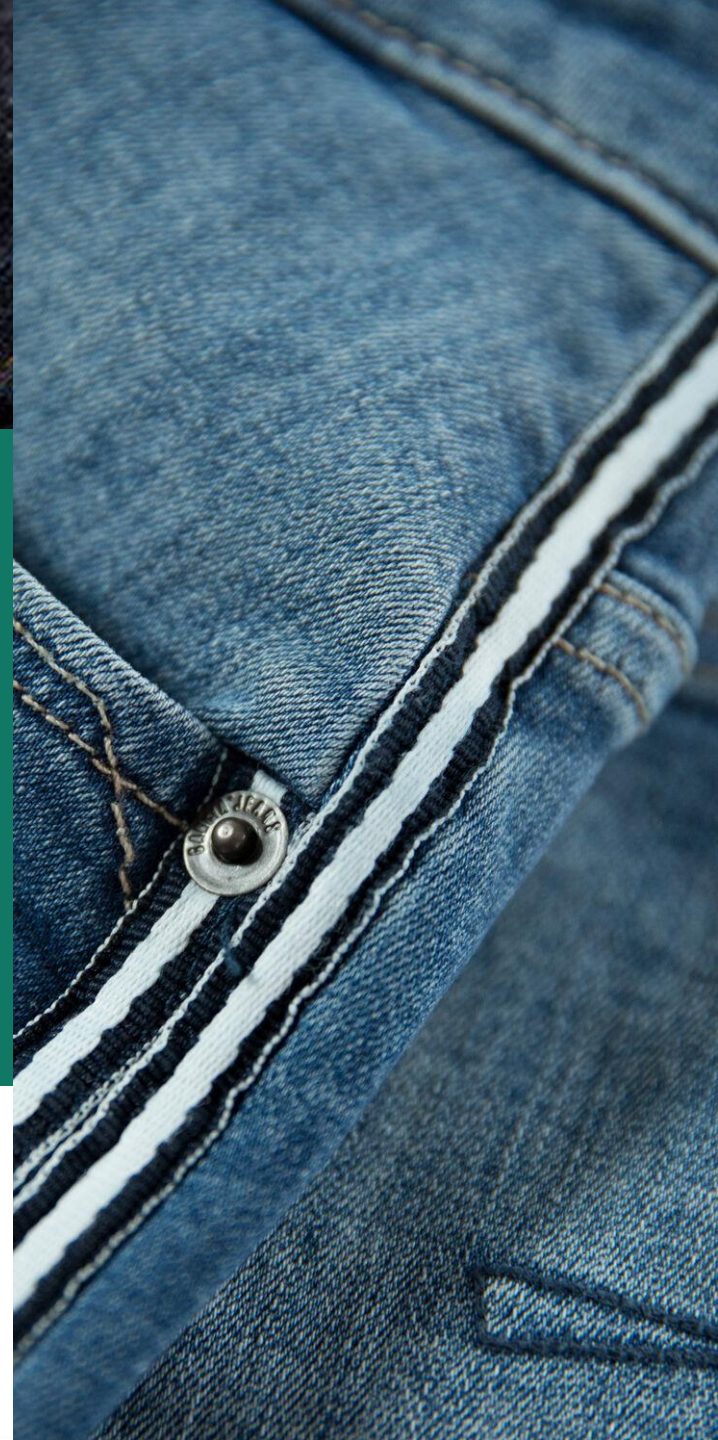




RENAISSANCE @ COTSWOLD
ASIA

TAPES

Reflective, Draw, Elastic, Logo

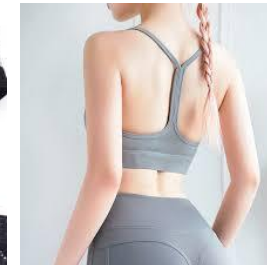


Tapes for Denim, Twill & Athleisure

Reflective, Draw, Logo, Elastic



- Reflective tape – application denim side seam
- Jacquard logo tape
- Silicon logo tape
- Draw cord, elastic tape, emboss, buttonhole, shoelace
- Y-elastic for bra top, underwear





RENAISSANCE @ COTSWOLD
ASIA

Pocket Lining & Mesh

SPECIAL MESH

Inside Out

The Perfect Combination
of Pocket Lining & Mesh

Keeps the tailored appearance with a cooling & lightness provided by the special mesh





RENAISSANCE



Corporate Headquarters

Cotswold Asia USA
10 East 40th Street, Suite 3410
New York, NY 10016
Tel: +212-689-3432

James W. McKinnon
james@cotswoldindustries.com

Cotswold Asia – Hong Kong

B5, 3/F, Sing Mei Industrial Building
29-37, Kwai Wing Road
Kwai Chung, N.T., Hong Kong
TEL : 852-2383-3060, 2383-3660

Matthew Wong
Matthew.wong@cotswoldasia.com



Cotswold Asia– Shanghai

Cotswold Asia Ltd. Room 505-506, Building 3 #58
East Xinjian Road, Minhang district, Shanghai China
201199
Tel: +86-21-34976915

Shlomi Hersckovitz
shlomi@cotswoldasia.com

WWW.COTSWOLDAPPAREL.COM

